

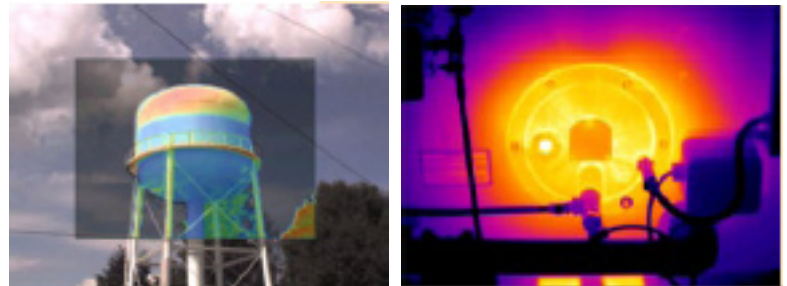
FLUKE TI-32 / TIR-32 SPECIFICATIONS



The new Fluke Ti32 and TiR32 thermal imagers combine a powerful 320x240 FPA sensor with field upgradeable lenses, removable batteries, and many new features. Built on the award winning design of the Ti25 family, these new imagers deliver amazingly clear image quality in a package that will withstand the toughest environments. Intended for industrial and building diagnostic applications, the Ti32 and TiR32 will allow our customers to find, fix and prove problems and repairs fast. In these tough economic times, we all have to do more with less. These new imagers help our customers do exactly that.

FEATURES

- 320X240 FPA (60HZ and 9HZ versions)
- Industry-leading $\leq 50\text{mK}$ thermal sensitivity
- Two (2) replaceable, rechargeable LiON batteries for extended use situations
- External charging bay or in-imager charging
- Field-installable optional telephoto and wide-angle lenses
- High temperature or dew point alarms
- Transmission correction
- Better level/span adjustment
- Thumbnail view memory
- New display options
- Ultra-Contrast™ palette options
- .IS2, .BMP, and .JPG File formats on imager
- Patented Fluke IR-Fusion® Technology both in camera and software combines visible (visual) image with IR image in full screen or picture-in-picture views for easy identification and reporting of problems
- Rugged and reliable: Engineered to withstand a 2 meter (6.56 feet) drop
- 640 x 480 large 3.6" diagonal color LCD display (landscape format)
- SmartView® analysis and reporting software (with free upgrades through life of product)
- Removable 2 GB SD memory card for easy storage and transfer of thermal and visible images
- Multi-function memory card reader
- Complete solution includes hardware and software to get you going
- Two-year warranty



**Export Restrictions and License apply for all models

www.infrared.com

5301 Longley Ln Suite D-154 Reno, NV 89511 - 775-827-2440 - FAX: 775-827-2441

FLUKE TI-32 / TIR-32 SPECIFICATIONS

	Fluke Ti32	Fluke TIR32
Temperature measurement range (not calibrated below -10 °C)	-20 °C to +600 °C (-4 °F to +1112 °F)	-20 °C to +150 °C (-4 °F to +302 °F)
Temperature measurement accuracy	± 2 °C or 2 % (at 25 °C nominal, whichever is greater)	± 2 °C or 2 % (at 25 °C nominal, whichever is greater)
On-screen emissivity correction	Yes	Yes
On-screen reflected background temperature compensation	Yes	Yes
On-screen transmission correction	Yes	Yes
Image capture frequency	60HZ	60HZ
Detector type	320 X 240 Focal Plane Array, uncooled microbolometer	320 X 240 Focal Plane Array, uncooled microbolometer
Infrared spectral band	7.5 µm to 14 µm (long wave)	7.5 µm to 14 µm (long wave)
Thermal sensitivity (NETD)	≤ 0.05 °C at 30 °C target temp. (50 mK)	≤ 0.05 °C at 30 °C target temp. (50 mK)
File formats (on imager)	Non-radiometric (.bmp) or (.jpeg) or fully-radiometric (.is2)	Non-radiometric (.bmp) or (.jpeg) or fully-radiometric (.is2)
Memory review	Thumbnail view navigation and review selection	Thumbnail view navigation and review selection
Standard palettes	8	8
Ultra Contrast™ palettes	8	8
Fast auto toggle between manual and auto modes	Yes	Yes
Fast auto-rescale in manual mode	Yes	Yes
Minimum span (in manual mode)	2.5 °C (4.5 °F)	2.0 °C (3.6 °F)
Minimum span (in auto mode)	5 °C (9 °F)	3 °C (5.4 °F)
Color alarms (temperature alarms)	High-temperature alarm (user-selectable)	Dewpoint temperature alarm (user-selectable)
Batteries	Two lithium ion rechargeable smart battery packs	Two lithium ion rechargeable smart battery packs
Battery life	Four+ hours continuous use per battery pack (assumes 50 % brightness of LCD)	Four+ hours continuous use per battery pack (assumes 50 % brightness of LCD)
Drop Test	2 meter (6.5 feet) with standard lens	2 meter (6.5 feet) with standard lens
Size (H x W x L)	27.7 cm x 12.2 cm x 17.0 cm (10.9 in x 4.8 in x 6.7 in)	27.7 cm x 12.2 cm x 17.0 cm (10.9 in x 4.8 in x 6.7 in)
Weight (battery included)	1.05 kg (2.3 lb)	1.05 kg (2.3 lb)
Supported Languages	16	16

For specifications and additional information, please contact us.

Export Restrictions and License apply for all models

www.infrared.com

5301 Longley Ln Suite D-154 Reno, NV 89511 - 775-827-2440 - FAX: 775-827-2441