

## CAMIR 6000 XT (HOTSHOT)

Introducing **CAMIR 6000 XT HotShot** the thermography professional's choice in high performance infrared cameras. HotShot integrates state of the art infrared imaging technology, our new dual laser target highlighter and software functionality created to address the demands of heavy duty infrared camera users. Stunning 640x480 infrared image details combined with an integrated high quality mega pixel visible camera and advanced image fusion greatly improves image interpretation and the quality of infrared inspection reports.

The **CAMIR 6000 XT HotShot** also features an integrated inspection data logger and optional route management system that can bring new levels of productivity to your IR inspection program. Our highly intuitive graphical user touch screen interface puts nearly all commands within a single touch eliminating complex pull down menu controls.



### Features

- Razor-sharp 640x480 Pixel Thermal Images
- Highest Thermal Sensitivity Available
- Thermal/Visible Image Fusion
- LaZir-X - Dual Laser Target Highlighter
- Easy to Operate

CAMIR 6000 XT Simply the best value on the market today!



640x480 Resolution

- World's best image quality
- 0.05°C Thermal Sensitivity – Visualize smaller temperature differences
- Tight temperature scale control lets you optimize image contrast



Easy To Use

- Lightweight ergonomic design
- Touchscreen interface simplifies inspection data collection
- Highly intuitive interface reduces learning curve
- Automated report generation increases productivity up to 90%



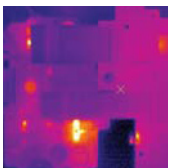
Innovative Design

- Unique dual laser target marking system
- Advanced image fusion improves image interpretation.
- Lightweight miniature tablet style makes it comfortable to hold



Affordable Performance

- Application-specific packages offered
- Lowest ownership costs over 5 years
- 640x480 performance for 320x240 camera prices



## ERGONOMIC DESIGN

**Strike Zone** ( belt level) Every user has a different preference about holding tools. HotShot's infinite position IR eyeball enables you to hold the camera in the most comfortable position for you first and then rotate the camera to point at the object.

**Overhead** When viewing overhead objects HotShot's articulating IR eyeball ensures that you maintain line of sight and optimal viewing angle and wrist position.

**Floor Level** Only HotShot keeps you comfortable whether you crouch to maintain a perpendicular view or stand upright and rotate the IR eyeball down to view objects at floor level.

**Viewing Angle** While today's LCD displays feature improved viewing angle performance, LCD displays still work best when viewed perpendicular.

**Notice** viewing angle and grip angle do not change over range of object viewing levels. 2 Human Factors Specification Mil-Std 1472f

Standard Configuration	
HotShot HD-XT	PC Card Adapter
Lithium-Ion Batteries (2)	Hardside Carrying Case
Universal AC Power Supply	Battery Charger
USB Cable - Mini B Jack	Operator Manual
ViewIR Desktop Software	512MB CF Memory Card
Desktop Software	
ViewIR	Included
ReportIR	Automatic multi-page report - included
RouteIR	Thermography program management software package - included
Fault Tree Manager	Equipment-type editor - included
Ordering Information	
Item	Description
914833	HotShot HD-XT
914636	Rechargeable Batteries

## Specifications:

Imaging Performance	
Resolution	640x480
Detector Type	VOx Microbolometer
Sensitivity	50mK (0.05°C)
Field of View / Min. Focus	25°x18° / 0.4m
Frame Rate	30Hz
Focus	Manual
Visible Camera	1280x1024 pixels, flash, torch
Imaging Presentation	
Image Modes	IR/PIP/Fusion
Display	3.5" 640x480 LCD touchscreen
Color Palettes	7 (4 color, 3 grey)
Measurement	
Temperature Range	-20°C to 100°C
Accuracy	±2°C or ±2% (whichever is greater)
Spot Size Ratio	500:1 (standard lens)
Measurement Modes	Point, Area (fixed)
Measurement Correction	emissivity, background/transmission/ambient
Image Storage and Camera Functionality	
Digital Media	512MB CF card (~600 hi-res images)
Internal Image Capacity	512MB (~600 hi-res images)
Recording Modes	Snapshot/sequence (optional)
Image Annotation	Touchscreen data logger GUI
In-Camera Routing	Optional
Target Marker	Dual laser line target identifier
Classification	Class 2
Power	
Battery Type	Rechargeable Lithium-Ion
Battery Run Time	2.5 hours
Battery Charging	10-16VDC input. Charging status LED
AC Power Supply	100-270 VAC, 50/60 Hz
Environmental	
Operating Temperature Range	-5°C to 50°C
Storage Temperature Range	-30°C to 70°C
Humidity	10% to 95%, IEC 360
Water and Dust	IP-54
Shock / Vibration	25G, IEC 68-2-29 / 2G, IEC 68-2-6
Interfaces	
Real-Time Digital Output	USB 2.0 (optional)
Image Transfer	USB 2.0, CF card
Video	NTSC
Physical	
Weight/Dimensions	2.7 lbs/ 7.5" x 7.5" x 3"